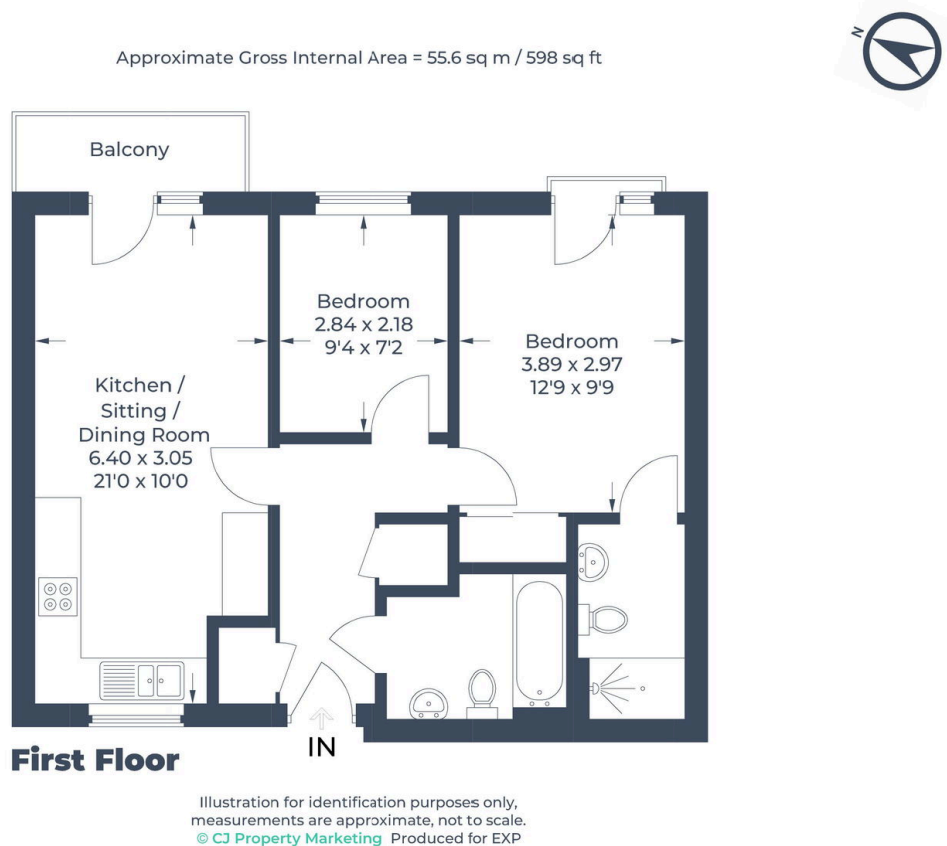


27 Leyland Road,
Offers Over £215,000

🛏 2 🚿 2 🚻 1



- Two Bedroom First Floor Apartment
- Enclosed Communal Garden
- Communal Parking
- 105 Years Remaining On Lease
- Double Glazing & Gas Central Heating
- Large En-Suite Shower Room
- Balcony
- Service Charge £119 PCM / Ground Rent £174 Per Annum
- Secure Entry Phone System
- Please quote reference MS0216



A well presented first floor apartment on a modern, popular development in north Dunstable. Secure entry phone system, entrance hall, open plan living area with lounge & balcony, integrated kitchen and breakfast bar, two bedrooms with en-suite shower room & Juliette balcony to master, family bathroom, secure communal garden, bike store, communal parking, double glazing & gas central heating.

Please quote reference MS0216

